



pearson  
ferrier®

APT 1 WALMERELY MANOR 259 WALMERSLEY  
Bury, BL9 6NX  
£135,000



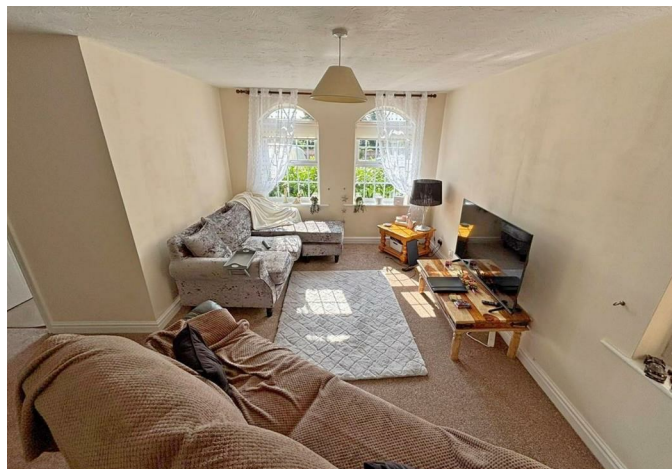
# WALMERELY MANOR 259 WALMERSLEY ROAD

## Property at a glance

- GROUND FLOOR APARTMENT
- TWO DOUBLE BEDROOMS
- LOUNGE & SEPARATE KITCHEN
- NEWLY FITTED BATHROOM
- NEW DECORATION & FLOORING THROUGHOUT
- NO ONWARD CHAIN
- IDEAL FIRST TIME BUY

A refurbished two double bedroom ground floor apartment, located in the popular development of Walmersley Manor, which is conveniently positioned for easy access to Bury town centre, local shops and amenities with the motorway being close by. The property has just had a new bathroom installed, new flooring and redecoration throughout and briefly comprises of: Lounge & separate kitchen, two double bedrooms, newly installed bathroom and also benefits from allocated parking.

Leasehold - 999yrs from 24th November 1988  
Service charge £80 per month  
EPC-D  
Council Tax Band- A







Bury Office  
435/7 Walmersley Road, Bury, Lancashire, BL9 5EU  
Telephone: 0161 764 4440  
Fax: #  
Email: bury@pearsonferrier.co.uk

www.pearsonferrier.co.uk

All statements contained in these particulars are for indicative purposes only and are made without responsibility on the part of Pearson Ferrier and the vendors of this property and are not to be relied on as statements or representations of fact. Potential purchasers should satisfy themselves by inspection or otherwise as to the accuracy of such details contained in these particulars.

